

# RETRO-FIT BOARDS

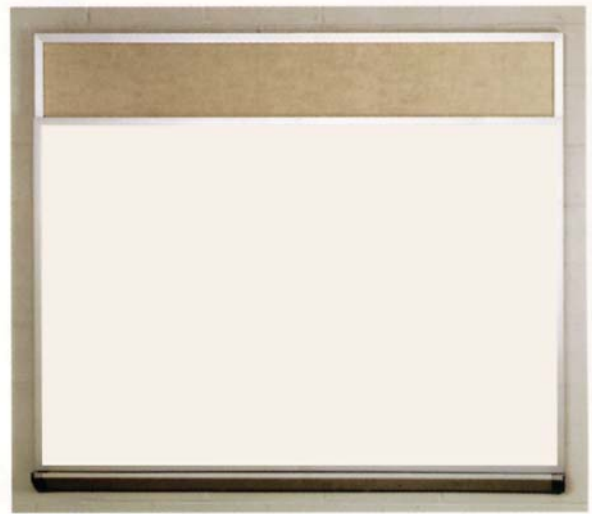


The retro-fit boards are made to fit over the top of an existing board. These boards are white 28 ga porcelain on a steel markerboard surface which is laminated to a 1/4" hardboard with a mylar backer, 1" face aluminum trim and NO tray.

These boards may be installed over wood or aluminum framed boards and are pre-drilled for installation. All installation hardware is included.

To determine the size of the board you need, measure the existing board from the top outer edge to the top of the tray and from side to side (outer edges).

All Retro-Fit boards are made to order and are non-returnable.



1-12	13+	Part No.	Description
<b>\$246.00</b>	<b>\$227.75</b>	RF-406	4 x 6 Retro-fit Board
<b>\$304.50</b>	<b>\$282.00</b>	RF-408	4 x 8 Retro-fit Board
<b>\$392.00</b>	<b>\$362.75</b>	RF-410	4 x 10 Retro-fit Board
<b>\$438.00</b>	<b>\$405.50</b>	RF-412	4 x 12 Retro-fit Board
<b>\$604.00</b>	<b>\$559.25</b>	RF-416	4 x 16 Retro-fit Board



WWW.CENTARIND.COM  
e-mail:  
CUSTSERVICE@CENTARIND.COM



**Centar Industries** INCORPORATED  
16313 WESTWOODS BUSINESS PARK, ELLISVILLE, MO 63021  
CALL TOLL FREE: 1-800-843-7878 • FAX 1-636-391-2336

IN ST. LOUIS CALL:  
636-391-2333

# WALL COVERING MATERIALS

## POLY-RITE II DRY ERASE WRITING SURFACE



An excellent dry-erase writing surface that can be applied to worn chalk or marker surfaces, or directly to the wall. Has a magnetic surface. Use poly-rite adhesive to apply.

The poly-rite surface is 48" wide and available in rolls up to 75' long. Please call for pricing.

## CORK ROLLS

This style of cork is used for custom designed applications. It's cork appearance has made it a popular decorating material while it's resistance to wear makes it an ideal display material. Use cork adhesive to apply.



The cork roll is 1/4" thick and 48" wide. Available in rolls up to 100' long.

Price	Part No.	Description
<b>\$ 61.50</b>	UN-406	4 x 6 Cork Roll
<b>\$ 82.00</b>	UN-408	4 x 8 Cork Roll
<b>\$102.50</b>	UN-410	4 x 10 Cork Roll
<b>\$123.00</b>	UN-412	4 x 12 Cork Roll
<b>\$969.75</b>	UN-400	4 x 100 Cork Roll
<b>\$ 83.50</b>	PR-193	4 Gallon Adhesive

# SHEET MATERIAL WITHOUT FRAME



- High quality display board surfaces available as unframed sheets
- Can use existing frames
- Full-sized panels or custom cut
- 2-3 week delivery
- Hardware not included
- Additional sizes available

## PORCELAIN STEEL SHEET MATERIAL (Best)

50 year warranty, Magnetic surface  
Porcelain on steel on 1/2" fiberboard with 92 ga mylar backer

Price	Part No.	Description
<b>\$185.25</b>	UR-406	4 x 6 Sheet Material
<b>\$222.50</b>	UR-408	4 x 8 Sheet Material
<b>\$296.75</b>	UR-410	4 x 10 Sheet Material
<b>\$341.00</b>	UR-412	4 x 12 Sheet Material
<b>\$448.25</b>	UR-416	4 x 16 Sheet Material

## HPL SHEET MATERIAL (Better)

25 year warranty, High Pressure Laminate  
HPL on 1/2" fiberboard with 92 ga mylar backer

Price	Part No.	Description
<b>\$141.25</b>	UL-406	4 x 6 Sheet Material
<b>\$154.25</b>	UL-408	4 x 8 Sheet Material
<b>\$212.75</b>	UL-410	4 x 10 Sheet Material
<b>\$222.50</b>	UL-412	4 x 12 Sheet Material

## REMARKABOARD SHEET MATERIAL (Good)

90 day warranty

Price	Part No.	Description
<b>\$ 74.50</b>	UM-406-14	4 x 6 Sheet Material 1/4" thick
<b>\$ 89.75</b>	UM-408-14	4 x 8 Sheet Material 1/4" thick

## PORCELAIN STEEL SKIN

50 year warranty, porcelain on steel material, 24 ga thickness

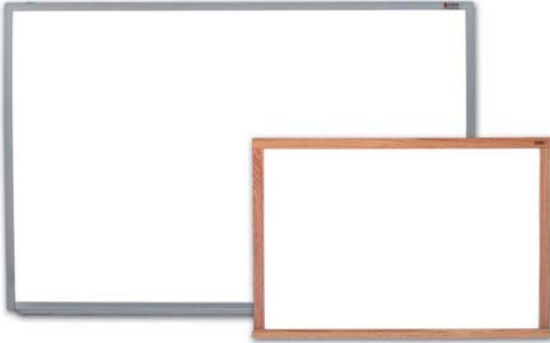
Price	Part No.	Description
<b>\$179.25</b>	UK-406	4 x 6 Skin
<b>\$203.25</b>	UK-408	4 x 8 Skin

WWW.CENTARIND.COM  
e-mail:  
CUSTSERVICE@CENTARIND.COM

**Centar Industries** INCORPORATED  
16313 WESTWOODS BUSINESS PARK, ELLISVILLE, MO 63021  
CALL TOLL FREE: 1-800-843-7878 • FAX 1-636-391-2336

IN ST. LOUIS CALL:  
636-391-2333

# MARKERBOARDS



- Four markers and an eraser towel are shipped with all framed dry-erase boards.
- 1" map rail included with Alum PRO-RITE only.
- All boards are available with either an aluminum or red oak frame.
- Boards are shipped with installation hardware.
- Samples available.
- See page 9 for map rails and accessories.
- Custom sizes available. Call for quote.

\* All 3x4 are actually 33-1/2" x 45-1/2" (in order to ship by UPS)

**FREE FREIGHT ON ALL BOARD ORDERS OVER \$1,050**

## PRO-RITE MARKERBOARDS – BEST

The top of the line Pro-Rite series offers a steel magnetic surface with a 50-year warranty. The low gloss finish allows for high quality projection.

1-12	13+	Part No.	Description
\$ 79.25	\$ 73.50	PR-203	2 x 3 Markerboard - Alum Frame Best
\$145.50	\$134.75	PR-304	3 x 4 Markerboard - Alum Frame Best*
\$201.75	\$187.00	PR-404	4 x 4 Markerboard - Alum Frame Best
\$258.25	\$239.25	PR-406	4 x 6 Markerboard - Alum Frame Best
\$314.00	\$290.75	PR-408	4 x 8 Markerboard - Alum Frame Best
\$401.50	\$371.75	PR-410	4 x 10 Markerboard - Alum Frame Best
\$469.75	\$435.00	PR-412	4 x 12 Markerboard - Alum Frame Best
\$ 83.50	\$ 77.25	WR-203	2 x 3 Markerboard - Oak Frame Best
\$159.25	\$147.50	WR-304	3 x 4 Markerboard - Oak Frame Best*
\$217.00	\$201.00	WR-404	4 x 4 Markerboard - Oak Frame Best
\$273.50	\$253.25	WR-406	4 x 6 Markerboard - Oak Frame Best
\$330.50	\$306.00	WR-408	4 x 8 Markerboard - Oak Frame Best
\$426.25	\$394.75	WR-410	4 x 10 Markerboard - Oak Frame Best
\$486.25	\$450.25	WR-412	4 x 12 Markerboard - Oak Frame Best

## HPL MARKERBOARDS – BETTER

The High Pressure Laminate series provides you with a durable, moderately priced board. This non-magnetic surface, much like a kitchen countertop, comes with a 25-year warranty.

1-12	13+	Part No.	Description
\$ 69.00	\$ 63.75	LA-203	2 x 3 Markerboard - Alum Frame Better
\$105.50	\$ 97.75	LA-304	3 x 4 Markerboard - Alum Frame Better*
\$128.75	\$119.25	LA-404	4 x 4 Markerboard - Alum Frame Better
\$187.50	\$173.50	LA-406	4 x 6 Markerboard - Alum Frame Better
\$242.50	\$224.50	LA-408	4 x 8 Markerboard - Alum Frame Better
\$315.50	\$292.00	LA-410	4 x 10 Markerboard - Alum Frame Better
\$369.75	\$342.50	LA-412	4 x 12 Markerboard - Alum Frame Better
\$ 73.75	\$ 68.25	LW-203	2 x 3 Markerboard - Oak Frame Better
\$112.25	\$104.00	LW-304	3 x 4 Markerboard - Oak Frame Better
\$142.00	\$131.50	LW-404	4 x 4 Markerboard - Oak Frame Better
\$197.00	\$182.50	LW-406	4 x 6 Markerboard - Oak Frame Better
\$259.00	\$239.75	LW-408	4 x 8 Markerboard - Oak Frame Better
\$338.75	\$313.75	LW-410	4 x 10 Markerboard - Oak Frame Better
\$388.50	\$359.75	LW-412	4 x 12 Markerboard - Oak Frame Better

## REMARKABOARD BOARDS – GOOD

The Remarkaboard series is an economical board with a melamine writing surface. This non-magnetic surface comes with a 5-year warranty.

1-12	13+	Part No.	Description
\$ 32.50		MA-203	2 x 3 Markerboard - Alum Frame Good
\$ 48.50		MA-304	3 x 4 Markerboard - Alum Frame Good*
\$104.75	\$ 97.00	MA-404	4 x 4 Markerboard - Alum Frame Good
\$126.75	\$117.50	MA-406	4 x 6 Markerboard - Alum Frame Good
\$152.25	\$141.00	MA-408	4 x 8 Markerboard - Alum Frame Good
\$ 40.75	\$ 37.75	MW-203	2 x 3 Markerboard - Oak Frame Good
\$ 56.00	\$ 51.75	MW-304	3 x 4 Markerboard - Oak Frame Good*
\$130.25	\$120.50	MW-404	4 x 4 Markerboard - Oak Frame Good
\$153.00	\$141.75	MW-406	4 x 6 Markerboard - Oak Frame Good
\$181.25	\$167.75	MW-408	4 x 8 Markerboard - Oak Frame Good

WWW.CENTARIND.COM  
e-mail:  
CUSTSERVICE@CENTARIND.COM



**Centar Industries** INCORPORATED  
16313 WESTWOODS BUSINESS PARK, ELLISVILLE, MO 63021  
CALL TOLL FREE: 1-800-843-7878 • FAX 1-636-391-2336

IN ST. LOUIS CALL:  
636-391-2333

# REVERSIBLE MARKERBOARDS



## FREE STANDING REVERSIBLE BOARDS

- Free standing unit that fits any classroom or conference room
- Solid red oak wood or aluminum framing
- Wide full-length tray for storage
- Lockpin system ensures board will not swing

## PRO-RITE REVERSIBLE BOARDS

1-12	13+	Part No.	Description
\$524.75	\$486.00	RA-34C	3 x 4 Reversible - <b>Alum</b> Frame
\$629.50	\$582.75	RA-45C	3-1/2 x 5 Reversible - <b>Alum</b> Frame
\$665.75	\$616.50	RA-46C	4 x 6 Reversible - <b>Alum</b> Frame
\$411.75	\$381.25	RW-34C	3 x 4 Reversible - Oak Frame
\$538.50	\$498.75	RW-45C	3-1/2 x 5 Reversible - Oak Frame
\$542.00	\$501.75	RW-46C	4 x 6 Reversible - Oak Frame Best

## REMARKABOARD REVERSIBLE BOARDS

1-12	13+	Part No.	Description
\$401.50	\$371.75	RA-34H	3 x 4 Reversible - <b>Alum</b> Frame
\$450.50	\$417.00	RA-45H	3-1/2 x 5 Reversible - <b>Alum</b> Frame
\$471.75	\$436.75	RA-46H	4 x 6 Reversible - <b>Alum</b> Frame
\$305.75	\$283.25	RW-34H	3 x 4 Reversible - Oak Frame
\$362.25	\$335.50	RW-45H	3-1/2 x 5 Reversible - Oak Frame
\$369.75	\$342.50	RW-46H	4 x 6 Reversible - Oak Frame

# VINYL/BURLAP COVERED BULLETIN BOARDS



VINYL COLOR CHART



Cotton 02



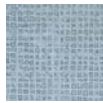
Antique White 03



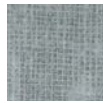
Pebble Beach 05



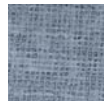
Natural 06



Blue Sky 15



Platinum 16



Pacific 17



Turquoise 18

## VINYL COVERED BOARDS

1-12	13+	Part No.	Description
\$ 99.25	\$ 92.00	AF-404	4 x 4 Vinyl Covered Board - <b>Alum</b> Frame
\$132.25	\$122.50	AF-406	4 x 6 Vinyl Covered Board - <b>Alum</b> Frame
\$163.25	\$151.25	AF-408	4 x 8 Vinyl Covered Board - <b>Alum</b> Frame
\$212.25	\$196.50	AF-410	4 x 10 Vinyl Covered Board - <b>Alum</b> Frame
\$245.25	\$227.00	AF-412	4 x 12 Vinyl Covered Board - <b>Alum</b> Frame
\$124.00	\$114.75	WF-404	4 x 4 Vinyl Covered Board - Oak Frame
\$162.50	\$150.50	WF-406	4 x 6 Vinyl Covered Board - Oak Frame
\$199.75	\$185.00	WF-408	4 x 8 Vinyl Covered Board - Oak Frame
\$258.25	\$239.25	WF-410	4 x 10 Vinyl Covered Board - Oak Frame
\$273.50	\$253.25	WF-412	4 x 12 Vinyl Covered Board - Oak Frame

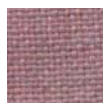
## BURLAP COVERED BOARDS

1-12	13+	Part No.	Description
\$113.75	\$105.25	AB-404	4 x 4 Burlap Covered Board - <b>Alum</b> Frame
\$170.75	\$158.25	AB-406	4 x 6 Burlap Covered Board - <b>Alum</b> Frame
\$207.25	\$192.00	AB-408	4 x 8 Burlap Covered Board - <b>Alum</b> Frame
\$273.50	\$253.25	AB-410	4 x 10 Burlap Covered Board - <b>Alum</b> Frame
\$295.50	\$273.50	AB-412	4 x 12 Burlap Covered Board - <b>Alum</b> Frame
\$141.25	\$130.75	WB-404	4 x 4 Burlap Covered Board - Oak Frame
\$188.00	\$174.25	WB-406	4 x 6 Burlap Covered Board - Oak Frame
\$243.25	\$225.25	WB-408	4 x 8 Burlap Covered Board - Oak Frame
\$294.75	\$273.00	WB-410	4 x 10 Burlap Covered Board - Oak Frame
\$354.00	\$327.75	WB-412	4 x 12 Burlap Covered Board - Oak Frame

## BURLAP COLOR CHART



Amethyst 19



Soft Rose 22



Sage 24



Sea Blue 25



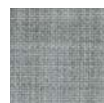
Dusk 26



Autumn Blend 27



Soft Beige 28



Light Gray 29

Product colors are reproduced as accurately as possible. Final color selection should be made from actual samples.

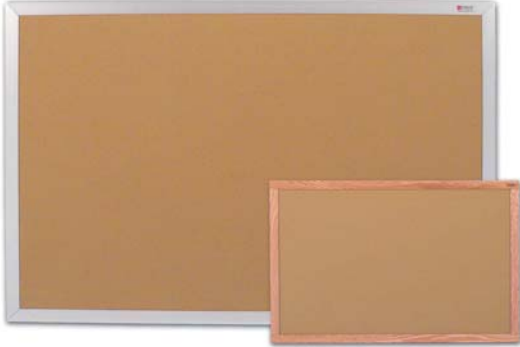
WWW.CENTARIND.COM  
e-mail:  
CUSTSERVICE@CENTARIND.COM



**Centar Industries** INCORPORATED  
16313 WESTWOODS BUSINESS PARK, ELLISVILLE, MO 63021  
CALL TOLL FREE: 1-800-843-7878 • FAX 1-636-391-2336

IN ST. LOUIS CALL:  
636-391-2333

# BULLETIN BOARDS



- Boards are shipped with installation hardware.
- All boards are available with either an aluminum or red oak frame.
- See page 9 for map rails and accessories.
- Custom sizes available. Call for quote.

Also available:

- Fabric Covered Bulletin Boards.
- Wrapped Edge Bulletin Boards.
- Enclosed & Freestanding Bulletin Board Pedestal Units.
- Enclosed Bulletin Board Wall Units. (Call us for details)

\* All 3x4 are actually 33-1/2" x 45-1/2" (in order to ship by UPS)

## PLAS-CORK BULLETIN BOARDS – BEST

The Plas-Cork series is manufactured with the highest quality self-healing cork thus providing a high performance board. Although tan is the standard color, custom colors are available.

1-12	13+	Part No.	Description
\$ 63.50	\$ 58.75	AP-203	2 x 3 Bulletin Board - <b>Alum</b> Frame Best
\$147.50	\$136.50	AP-304	3 x 4 Bulletin Board - <b>Alum</b> Frame Best*
\$186.00	\$172.25	AP-404	4 x 4 Bulletin Board - <b>Alum</b> Frame Best
\$277.50	\$257.00	AP-406	4 x 6 Bulletin Board - <b>Alum</b> Frame Best
\$332.00	\$307.50	AP-408	4 x 8 Bulletin Board - <b>Alum</b> Frame Best
\$438.75	\$406.25	AP-410	4 x 10 Bulletin Board - <b>Alum</b> Frame Best
\$515.75	\$477.50	AP-412	4 x 12 Bulletin Board - <b>Alum</b> Frame Best
\$ 67.50	\$ 62.50	WP-203	2 x 3 Bulletin Board - Oak Frame Best
\$155.00	\$143.50	WP-304	3 x 4 Bulletin Board - Oak Frame Best*
\$219.00	\$202.75	WP-404	4 x 4 Bulletin Board - Oak Frame Best
\$294.75	\$273.00	WP-406	4 x 6 Bulletin Board - Oak Frame Best
\$355.50	\$329.00	WP-408	4 x 8 Bulletin Board - Oak Frame Best
\$462.75	\$428.50	WP-410	4 x 10 Bulletin Board - Oak Frame Best
\$547.50	\$507.00	WP-412	4 x 12 Bulletin Board - Oak Frame Best

## NATURAL CORK BULLETIN BOARDS – BETTER

The Natural Cork series uses a 1/16" pebble cork laminated to a 7/16" fiberboard. This board is economical for the larger size needs.

1-12	13+	Part No.	Description
\$ 84.75	\$ 78.50	AN-404	4 x 4 Bulletin Board - <b>Alum</b> Frame Better
\$113.75	\$105.25	AN-406	4 x 6 Bulletin Board - <b>Alum</b> Frame Better
\$154.25	\$143.00	AN-408	4 x 8 Bulletin Board - <b>Alum</b> Frame Better
\$201.25	\$186.25	AN-410	4 x 10 Bulletin Board - <b>Alum</b> Frame Better
\$239.75	\$222.00	AN-412	4 x 12 Bulletin Board - <b>Alum</b> Frame Better
\$106.75	\$ 99.00	WN-404	4 x 4 Bulletin Board - Oak Frame Better
\$129.50	\$120.00	WN-406	4 x 6 Bulletin Board - Oak Frame Better
\$168.00	\$155.75	WN-408	4 x 8 Bulletin Board - Oak Frame Better
\$249.25	\$231.00	WN-410	4 x 10 Bulletin Board - Oak Frame Better
\$268.00	\$248.00	WN-412	4 x 12 Bulletin Board - Oak Frame Better

# COMBINATION BOARDS



- Boards are shipped with installation hardware.
- All boards are available with either an aluminum or red oak frame.

The material used in the combination boards consists of the Natural Cork bulletin board, the Remarkaboard markerboard and the Composition chalkboard.

1-12	13+	Part No.	Description
\$204.50	\$189.50	CA-406	4 x 6 Cork/Chalk - <b>Alum</b> Frame
\$264.50	\$245.00	CA-408	4 x 8 Cork/Chalk - <b>Alum</b> Frame
\$221.75	\$205.50	CW-406	4 x 6 Cork/Chalk - Oak Frame
\$289.25	\$267.75	CW-408	4 x 8 Cork/Chalk - Oak Frame
\$194.25	\$180.00	CA-406-M	4 x 6 Cork/Marker - <b>Alum</b> Frame
\$257.00	\$238.00	CA-408-M	4 x 8 Cork/Marker - <b>Alum</b> Frame
\$212.25	\$196.50	CW-406-M	4 x 6 Cork/Marker - Oak Frame
\$270.00	\$250.00	CW-408-M	4 x 8 Cork/Marker - Oak Frame

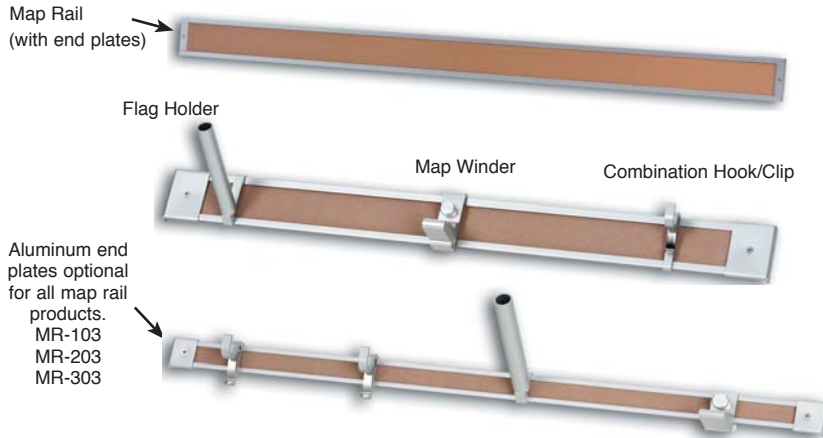
WWW.CENTARIND.COM  
e-mail:  
CUSTSERVICE@CENTARIND.COM



**Centar Industries** INCORPORATED  
16313 WESTWOODS BUSINESS PARK, ELLISVILLE, MO 63021  
CALL TOLL FREE: 1-800-843-7878 • FAX 1-636-391-2336

IN ST. LOUIS CALL:  
636-391-2333

# MAP RAILS & ACCESSORIES



Aluminum end plates optional for all map rail products.  
MR-103  
MR-203  
MR-303



Flag holders available for both 1" and 2" rails.

MR-101 = 1"  
MR-201 = 2"

1" and 2" Map Winders.  
MR-102 = 1"  
MR-202 = 2"

Combination Hook/Clip for both 1" and 2" rails  
MR-104 = 1"  
MR-204 = 2"

Map rail price based on packets of 3 or 6 and cork insert is made of natural cork. Plas-Cork insert available at an additional cost in tan or gray.

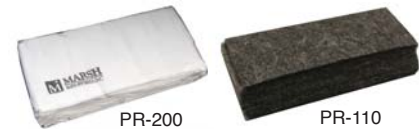
Length	Centar Price	Part No.	Description
6'	\$ 36.00	MR-106-3PKD	1" Map Rail - (3 pieces)
8'	\$ 49.00	MR-108-3PKD	1" Map Rail - (3 pieces)
10'	\$ 54.00	MR-110-3PKD	1" Map Rail - (3 pieces)
12'	\$ 65.00	MR-112-3PKD	1" Map Rail - (3 pieces)
6'	\$ 67.00	MR-106-6PKD	1" Map Rail - (6 pieces)
8'	\$ 83.00	MR-108-6PKD	1" Map Rail - (6 pieces)
10'	\$ 91.00	MR-110-6PKD	1" Map Rail - (6 pieces)
12'	\$109.00	MR-112-6PKD	1" Map Rail - (6 pieces)
	\$ 3.65	MR-101	1" Flag Holder
	\$ 10.00	MR-102	1" Map Winder (2 pieces)
	\$ 1.25	MR-103	1" End Plate
	\$ 1.65	MR-104	1" Combo Hook/Clip
6'	\$ 57.00	MR-206-3PKD	2" Map Rail - (3 pieces)
8'	\$ 76.00	MR-208-3PKD	2" Map Rail - (3 pieces)
10'	\$ 95.00	MR-210-3PKD	2" Map Rail - (3 pieces)
12'	\$111.00	MR-212-3PKD	2" Map Rail - (3 pieces)
6'	\$107.00	MR-206-6PKD	2" Map Rail - (6 pieces)
8'	\$134.00	MR-208-6PKD	2" Map Rail - (6 pieces)
10'	\$157.00	MR-210-6PKD	2" Map Rail - (6 pieces)
12'	\$202.00	MR-212-6PKD	2" Map Rail - (6 pieces)
	\$ 4.25	MR-201	2" Flag Holder
	\$ 10.75	MR-202	2" Map Winder - (2 pieces)
	\$ 1.50	MR-203	2" End Plate
	\$ 1.80	MR-204	2" Combo Hook/Clip
6'	\$ 26.75	MO-206-2166	2" Oak Wood Map Rail
	\$ 5.50	MO-752	2" Oak End Plate
6'	\$ 76.00	MR-306-3PKD	3" Map Rail - (3 pieces)
8'	\$ 91.00	MR-308-3PKD	3" Map Rail - (3 pieces)
10'	\$119.00	MR-310-3PKD	3" Map Rail - (3 pieces)
12'	\$140.00	MR-312-3PKD	3" Map Rail - (3 pieces)
6'	\$151.00	MR-306-6PKD	3" Map Rail - (6 pieces)
8'	\$166.00	MR-308-6PKD	3" Map Rail - (6 pieces)
10'	\$212.00	MR-310-6PKD	3" Map Rail - (6 pieces)
12'	\$275.00	MR-312-6PKD	3" Map Rail - (6 pieces)
	\$ 30.50	MR-301	3" End Plate - (6 pieces)

## PRO-RITE MARKERS



\$16.75	PR-150	Box of 12 (all one color)
\$18.00	PR-152	Box of 12 (assorted colors)
\$ 8.75	PR-170	4 Markers & 1 Eraser Towel

## ERASERS



\$10.00	PR-200	Eraser Towel (12 pack)
\$ 1.25	PR-110	1-1/2" x 4" Felt Eraser

## MAR-KLEEN CLEANER



\$55.25	PR-160	12 - 8 oz. Spray Cleaner
\$12.00	PR-161	1 - 8oz. Spray Cleaner
\$51.25	PR-162	1 Gallon Refill

**1" and 2" natural cork replacement available for map rails. Please call for pricing.**

WWW.CENTARIND.COM  
e-mail:  
CUSTSERVICE@CENTARIND.COM

**Centar Industries** INCORPORATED  
16313 WESTWOODS BUSINESS PARK, ELLISVILLE, MO 63021  
CALL TOLL FREE: 1-800-843-7878 • FAX 1-636-391-2336

IN ST. LOUIS CALL:  
636-391-2333