

FLOOR MATS

Waterhog Grand Premier



Oval one side

Great for main entrances and front offices where image and durability are most important.

Oval half moon

Great for under water fountains.



Available in 8 colors

- Rubber reinforced face design.
- Easy to maintain.
- 100% customer satisfaction guaranteed.

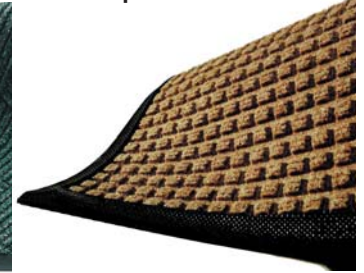
Part No.	Price	Description
WHGP355	\$ 96.50	3' x 5.5' Oval one side
WHGP310	\$166.50	3' x 10' Oval one side
WHGP459	\$137.75	4' x 5.9' Oval one side
WHGP410	\$282.75	4' x 10.5' Oval one side
WHGP67	\$283.00	6' x 7' Oval one side
WHGP611	\$468.75	6' x 11.6' Oval one side
WHGP318	\$ 31.50	3' x 1.8' Half Moon
WHGP423	\$ 53.75	4' x 2.3' Half Moon
WHGP633	\$ 115.75	4' x 3.3' Half Moon

Waterhog Classic

Diamond Pattern



Square Pattern



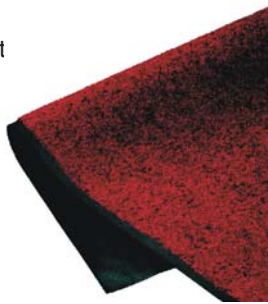
- Exclusive "Water Dam" allows the waterhog mat to hold up to 1-1/2 gallons of water per square yard.
- Water and dirt stays in the mat to keep floors clean and dry.
- Specify diamond or square pattern.
- Choose from a fabric or rubber edge.

Available in 11 colors

Part No.	Price	Description
WHC34	\$ 56.25	3' x 4' Diamond or Square
WHC38	\$136.25	3' x 8' Diamond or Square
WHC310	\$140.75	3' x 10' Diamond or Square
WHC46	\$112.50	4' x 6' Diamond or Square
WHC48	\$177.25	4' x 8' Diamond or Square
WHC410	\$187.50	4' x 10' Diamond or Square
WHC68	\$272.50	6' x 8' Diamond or Square
WHC612	\$395.50	6' x 12' Diamond or Square
WHC616	\$519.00	6' x 16' Diamond or Square
WHC620	\$648.75	6' x 20' Diamond or Square

Tri-Grip Mats

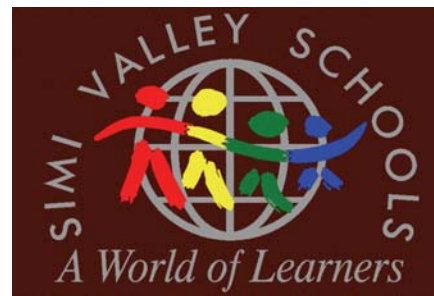
- Outstanding absorption and durability.
- Molded rubber backing resist curling and cracking.
- Available in flat, gripper, and suction backing types.
- Specify color.



Part No.	Price	Description
MM-TG23	\$ 22.00	2' x 3' Tri-Grip Mat
MM-TG34	\$ 43.75	3' x 4' Tri-Grip Mat
MM-TG35	\$ 54.75	3' x 5' Tri-Grip Mat
MM-TG36	\$ 65.50	3' x 6' Tri-Grip Mat
MM-TG310	\$109.25	3' x 10' Tri-Grip Mat
MM-TG46	\$ 87.25	4' x 6' Tri-Grip Mat
MM-TG48	\$116.50	4' x 8' Tri-Grip Mat
MM-TG410	\$145.50	4' x 10' Tri-Grip Mat

**More options available.
Please call for details.**

Classic Impressions



- Logos printed on the face of the mat with a state-of-the-art digital printer.
- Up to 24 colors per design.
- No set up charge. Orders ship in approx 7 days from final approval.
- On all logo mats we guarantee your satisfaction!

Part No.	1	2-10	Description
MM75-3547	\$182.75	\$ 95.25	3' x 4' Classic Impression Log Mat
MM75-3559	\$191.25	\$117.00	3' x 5' Classic Impression Log Mat
MM75-35119	\$314.25	\$224.00	3' x 10' Classic Impression Log Mat
MM75-4569	\$244.25	\$174.50	4' x 6' Classic Impression Log Mat
MM75-4595	\$369.50	\$259.50	4' x 8' Classic Impression Log Mat
MM75-5895	\$394.75	\$325.00	5' x 8' Classic Impression Log Mat
MM75-58119	\$484.00	\$406.25	5' x 10' Classic Impression Log Mat
MM75-70119	\$522.25	\$459.75	6' x 10' Classic Impression Log Mat
MM75-70143	\$626.25	\$550.75	6' x 12' Classic Impression Log Mat

WWW.CENTARIND.COM
e-mail:
CUSTSERVICE@CENTARIND.COM

Centar Industries INCORPORATED
16313 WESTWOODS BUSINESS PARK, ELLISVILLE, MO 63021
CALL TOLL FREE: 1-800-843-7878 • FAX 1-636-391-2336

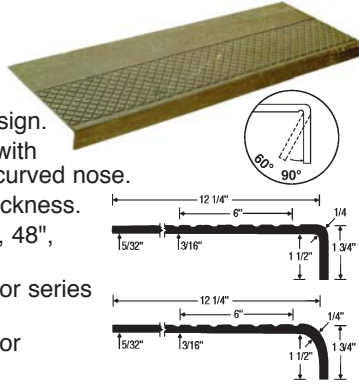
IN ST. LOUIS CALL:
636-391-2333

STAIR TREADS

Rubber Stair Treads

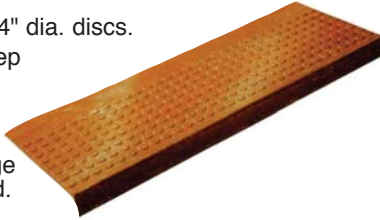
Cat. No. ST622R

- Diamond Tread uses a 1/2" diamond and 1/2" smooth design.
- 1/4" thick and 12-1/4" deep with 1-1/2" adjustable square or curved nose.
- Color extends throughout thickness.
- Standard lengths of 36", 42", 48", 54", 60" and 72".
- Square nose available in color series 1, 2, & 3.
- Curved nose available in color series 1.



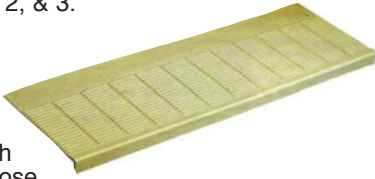
Cat. No. ST800R

- Lo-Disc Stair Tread has 3/4" dia. discs.
- 3/16" thick and 12-1/4" deep with 1-1/2" square nose.
- Color extends throughout thickness.
- Thicker rubber at front edge adds to the life of the tread.
- Easy to clean.
- Excellent for lighter traffic areas.
- Standard lengths of 36", 42", 48", 54", 60" and 72".
- Available in color series 1, 2, & 3.



Cat. No. ST1000

- Stair tread with horizontal bar pattern.
- 1/4" thick and 12" deep with 1-3/16" square or curved nose.
- Color extends throughout thickness.
- Easy to clean.
- Standard lengths of 36", 42", 48", 54", 60" and 72". (54", 60", and 72" available in square nose only.)
- Square nose available in color series 1 & 2.
- Curved nose available in color series 1.



Cat. No. ST750

- Molded rubber smooth flat surface stair tread.
- 3/16" thick and 12-1/2" deep with square or curved nose.
- Smooth surface offer long wear, easy cleaning with reduced noise.
- Standard lengths of 36", 42", 48", 54", 60" and 72".
- Available in color series 1 & 2.

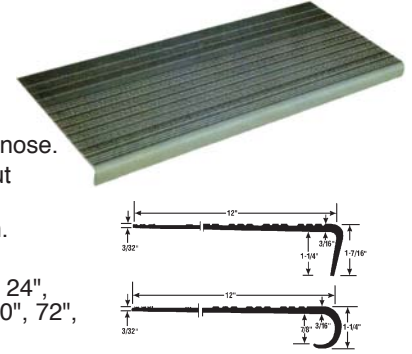


All rubber stairs treads are available with grit strip.
Call for details

Vinyl Stair Treads

Cat. No. ST375V

- Rib Design Stair Tread.
- 1-1/4" square or curved nose.
- Color extends throughout thickness.
- Easy to install and clean.
- Front edge thicker.
- Standard lengths of 18", 24", 30", 36", 42", 48", 54", 60", 72", 84" and 96".
- Available in brown, sand, gray, and black.
- Use stair riser **ST405VR**.



Aluminum Stair Treads

Cat. No. ST75GSA

- Grit Surface Alum. Stair Treads are 3/16" thick; 7-1/2" deep with a square nose.
- Can be installed inside or outside on concrete, wood, treated lumber, slate or marble steps.
- Available in black, brown, gray, green, blue, red, yellow, or white with colors separated by an aluminum rib.



Coved Stair Riser (Rubber)

Cat. No. ST505CR

- Coved riser allows for easier cleaning, is more attractive and reduces fitting procedures at rear of steps.
- Trim to fit length and height.
- 1/8" thick and 7" high with 5/8" toe.
- Standard lengths of 36", 42", 48", 54", 60", or 72".
- Available in color series 1, 2, & 3.



Adhesive

Cat. No. ST400

- Used on all rubber stair treads or vinyl stair treads.
- Can be used on concrete, pan filled, wood, metal, marble and terrazzo steps.
- Rapid drying, brush on contact cement.
- 1 gallon covers 75 l/f.
- Available in 1 quart, 1 gallon and 4 gallon containers.

Grit Strip

Cat. No. ST-GS

- A non-slip surfacing with a pressure sensitive adhesive back.
- Recommended to be used with Grit Strip adhesive.
- 1/32" thick.
- Available in a variety of sizes and colors. Call for details.



WWW.CENTARIND.COM
e-mail:
CUSTSERVICE@CENTARIND.COM



Centar Industries INCORPORATED
16313 WESTWOODS BUSINESS PARK, ELLISVILLE, MO 63021
CALL TOLL FREE: 1-800-843-7878 • FAX 1-636-391-2336

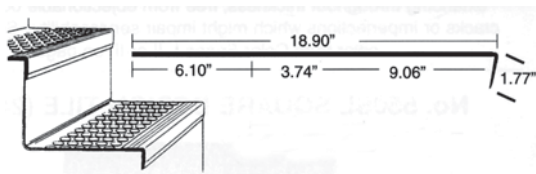
IN ST. LOUIS CALL:
636-391-2333

STAIR TREADS

UNO-TREAD

Cat. No. UT901

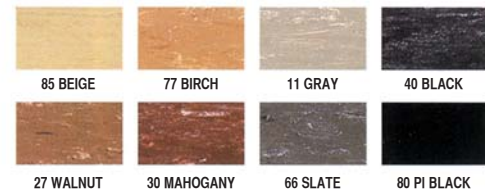
- One-piece rubber stair tread and riser.
- Construction makes for a cleaner look than the traditional two-piece installation.
- Standard lengths of 36", 42", 48", 54", 60", 72", and 78".
- Available in Uno-Tread colors only.
- Call for prices.



UNO-TREAD COLOR CHART



COLOR SERIES I



COLOR SERIES II



* available in #750, #250VI treads & 500-L Sheet Rubber only

COLOR SERIES III



Product colors are reproduced as accurately as possible. Final color selection should be made from actual samples.

WWW.CENTARIND.COM
e-mail:
CUSTSERVICE@CENTARIND.COM



Centar Industries INCORPORATED
16313 WESTWOODS BUSINESS PARK, ELLISVILLE, MO 63021
CALL TOLL FREE: 1-800-843-7878 • FAX 1-636-391-2336

IN ST. LOUIS CALL:
636-391-2333